

RIVERSIDE HOLIDAYS NORFOLK BROADS



BUNGALOWS & LAUNCHES FOR HIRE

RIVERSIDE HOLIDAYS LTD.

WOODCROFT, WOOD STREET, CATFIELD GT. YARMOUTH, NORFOLK NR29 5DF

TELEPHONE: 01692 580496

e.mail: riversideholidays@keme.co.uk

web: www.riverside-holidays.co.uk

**IMPORTANT: WHEN YOU BOOK BY TELEPHONE, HAVE YOUR RIVERSIDE
HOLIDAYS BROCHURE WITH YOU.
01692 580496**

FISHING - CLOSED SEASON

**A closed season for fishing operates
throughout the Broads from 15th March to 15th June**



Last Minute Bookings

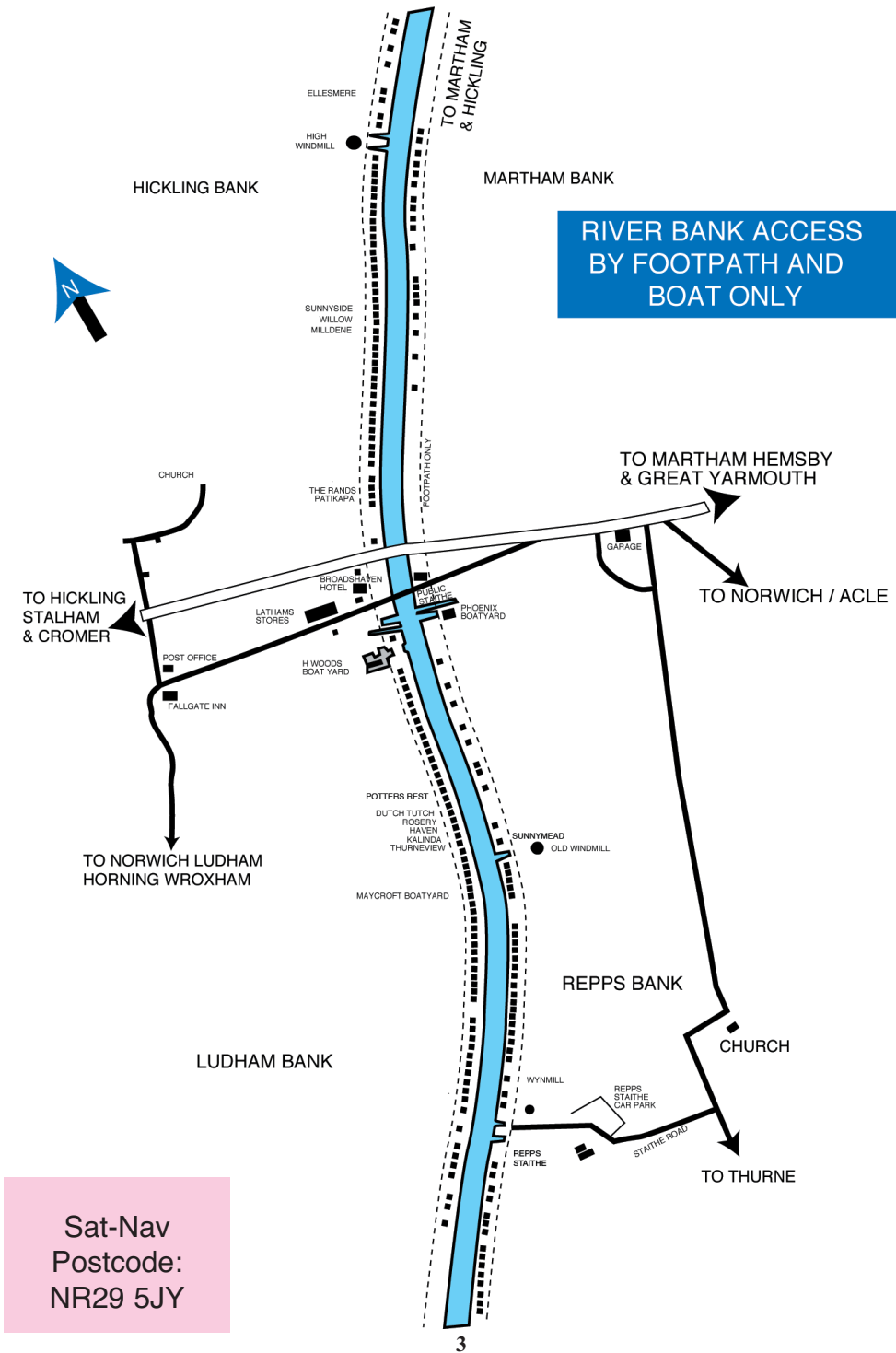
Vacancies do occur from time to time through cancellations.

**If you want to book a holiday relatively at a short notice - even as little as 24 hours -
please do phone us. We will always do our best for you.**

ARRIVALS - All visitors should report to the Site Office at Potter Heigham Bridge (For sat-nav - NR29 5JY). Visitors should inform the Booking Office of their expected time of arrival by sending back the pink arrival slip, duly completed, **28 days** before their holiday is due to start. For those arriving early we will try to arrange for their accommodation to be ready as soon after **12 noon** as possible. For visitors arriving after **5p.m.** arrangements will be made for them to be met at the Site Office.

The Site Office at POTTER HEIGHAM is open during the main season on
SATURDAYS between 9a.m. and 5p.m. June to October.

PLAN OF RIVERSIDE BUNGALOWS POTTER HEIGHAM





Help us to look after the places you love to visit

Riverside Holidays are delighted to help to raise funds for projects to ensure that the Broads are kept special for the future and to benefit our visitors and local communities alike.

We do this by inviting our guests to make a small voluntary donation to the Broads Trust who are responsible for the exciting new Love the Broads visitor giving scheme.

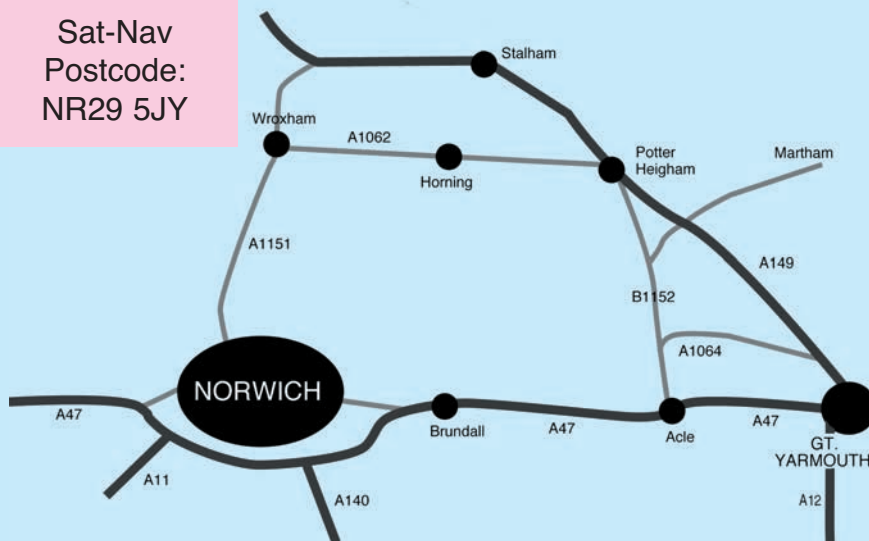
So far, visitor donations have supported projects which will help to increase the barn owl population on the Broads, to improve an accessible circular footpath around a local nature reserve and to provide new cycle route signage in quiet Broads' lanes.

Just £1 from every visitor could generate as much as 7 million pounds a year, so every small donation is a big help. Thank you!

Donate via text message!

Text NBCT01 followed by space then the amount you want to give to 70070

Sat-Nav
Postcode:
NR29 5JY



Follow Brown Tourist signs for 'The Broads'

Riverside Holidays Ltd

Riverside Holidays Ltd is a small family run business which has been providing self-catering holidays in riverbank bungalows for 40 years.

Most of our bungalows are along the river Thurne in Potter Heigham, Repps and Martham based around the medieval bridge in the Broads National Park.

The River Thurne offers excellent fishing especially for Bream, Roach, Perch and Pike, either from bungalow lawns or by boat further up river at Hickling Broad, Martham Broad and Horsey Mere.

The Broads National Park can be explored by boat but also offers fabulous opportunities for walking and cycling. The Weavers Way trail passes along the riverbank here. There are National Reserves within easy reach by boat, car or cycle. Bird watchers can see Harriers, Crane, Bearded Tits and perhaps Bitterns. Otters and Swallowtail butterflies are sometimes seen on bungalow lawns!

At Potter Heigham there are cafes and restaurants, two pubs, plus Lathams with its large fishing tackle section.

Quiet sandy beaches and dunes are less than five miles away (with seal colonies in autumn and winter). The large seaside resort of Great Yarmouth is only ten minutes away, while the historic city and shopping centre of Norwich is only fifteen miles. We hope you will enjoy your stay in Norfolk.

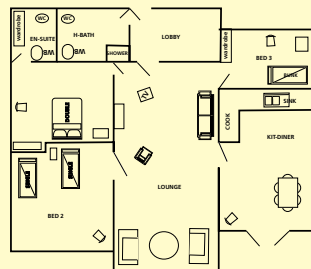
Ludham Bank & Repps Bank



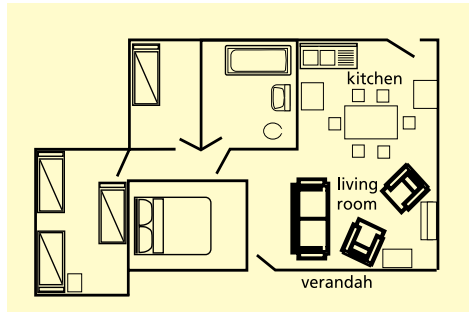
ROSERY

PH21

Sleeps 6



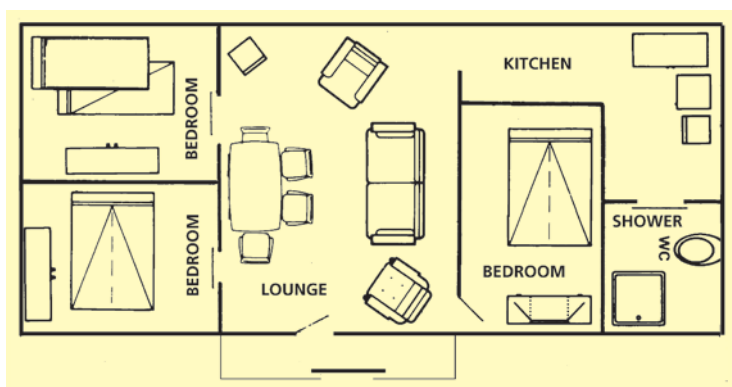
Bungalow on the Ludham bank with 40ft river frontage.
Three bedrooms: one with double bed & ensuite W.C. & W.B. Linen provided.
One with two single beds & one with two bunk beds.
Lounge with colour TV and electric fire. Storage heaters in "A" period.
Kitchen/diner with cooker, fridge and dishwasher.
Shower room with shower, W.B. and W.C. **FREE ELECTRICITY.**

THURNEVIEW**PH18****Sleeps 6**

Bungalow on the Ludham bank with approx. 40ft river frontage and a boat dyke. Three bedrooms, one with double bed, one with three singles and one with one single bed. Linen provided. Suitable for winter letting. Lounge/Dining room with colour T.V. + DVD and electric fire. Night storage heaters. Kitchen with units, fridge, cooker, microwave, sink and water heater. Bathroom with W.C., W.B. & bath with shower over. Electricity by £1 meter. Verandah facing the river with decked seating area. Garden furniture provided. One free car parking space near the bridge. Free parking for one car, near the bridge.

KALINDA**PH19****Sleeps 6**

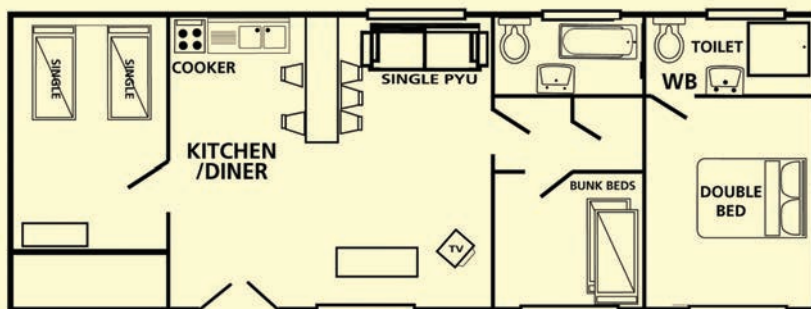
Bungalow on the Ludham bank with approx. 30ft river frontage and boat dyke. Three bedrooms, one with double bed and two with single beds. Linen provided. Lounge/Dining room with colour T.V. and electric fire. Kitchen with units, fridge, cooker, sink and water heater. Bathroom with bath, WB shower and WC. Electricity by £1 meter. Garden furniture provided.



Bungalow on the Hickling bank (beyond High's Mill) in a good position for fishing. Within easy reach of Hickling Broad by boat. Private plot with 40ft river frontage. Three bedrooms, two with double beds and one with two bunk beds. Lounge with colour Freeview T.V. with integral DVD, electric fire, kitchen with cooker, microwave, fridge and electric water heater over sink. Linen provided. Free electricity. Shower room with shower. W.B. and W.C. (flush toilet) Pets welcome (max 2). Decked seating area with garden furniture.

FISHING - CLOSED SEASON

**A closed season for fishing operates
throughout the Broads from 15th March to 15th June**



Large bungalow with 60ft river footage on the Hickling Bank. The boat dyke is reserved for owners use.

Three bedrooms. One with double bed and en-suite. One with twin beds and one with bunkbeds. Bed-settee in lounge. Linen provided with beds made before your arrival. Lounge with colour TV and video recorder. Kitchen area with electric cooker, fridge freezer, dishwasher, microwave and washing machine. Bathroom with shower, WB and WC. En-suite with shower, WB and WC.

Electricity by £1 slot meter. Decked seating area with garden furniture and lockable tackle shed. A boat is available with this bungalow, please call Jan on 07535 125448 for further details.

HAVEN

PH20

Sleeps 4/6



Bungalow on the Ludham bank, with 30 ft. river frontage.

Two bedrooms, one with double bed and one with two single beds. Also bed-settee in lounge. Linen provided.

Lounge/diner with colour TV and electric fire. All rooms have heaters.

Kitchen area with electric cooker, fridge and microwave.

Peninsula unit divides kitchen from lounge.

Shower room with shower, WB and WC.

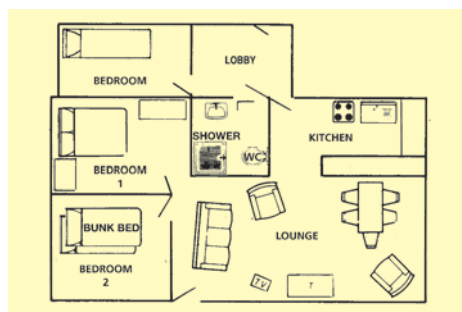
Electricity by £1 meter.

Part of lawn fenced for children. Garden furniture provided. Sorry no pets.

MINDANAO

M48B

Sleeps 5



Riverside bungalow at Martham. Private plot with 70ft river frontage & boat dyke.

Quiet location at upper reaches of the River Thurne with open views

Three bedrooms - one with double bed, one with bunkbeds, & one with single bed.

Linen provided.

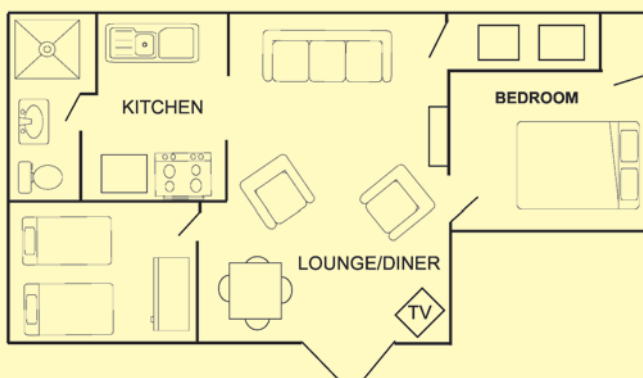
Lounge with colour television and digi-box.

Electricity charged by units used.

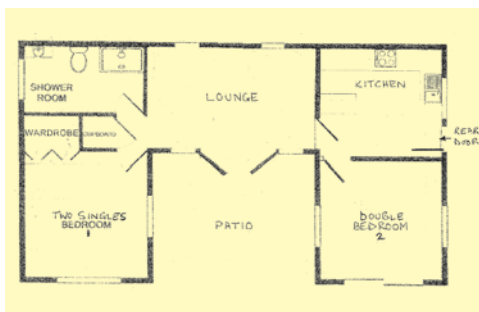
Kitchen: Open plan with electric cooker, fridge, microwave and water heater.

Shower room with shower, wash basin and WC. Garden furniture provided.

Free reserved parking space at Martham Ferry.



Bungalow on the Hickling bank with approx. 90ft riverfront including boat dyke. Two bedrooms, one with full size double bed and TV, the other with two full size single beds. There is also a convertible bed settee in the lounge. Open plan lounge diner with wide screen TV and DVD player. Kitchen with electric cooker, microwave, fridge, freezer and dishwasher. A washing machine and tumble dryer are also provided. Shower room with double size shower cubicle, WB and WC. Electric heating, linen provided and FREE ELECTRICITY. Outside lawn area with garden furniture. Tackle shed. Located next to Willow PH76b. Free parking for one car near the bridge. No smoking inside the bungalow For more pictures and information see owners website:- www.willowandsunnyside.uk



Bungalow on the Repps bank near Repps Staithe. Free reserved car-parking space near Repps Staithe.

Private plot with long river frontage.

Two bedrooms: one with double beds and one with two single beds. Linen provided.

Lounge with colour TV.

Fully fitted kitchen/diner. Electric heaters throughout.

Bathroom with large shower, W.B. and W.C. FREE ELECTRICITY

Patio with garden furniture.

Sorry no smoking, no pets.



River Thurne at Repps Staithe

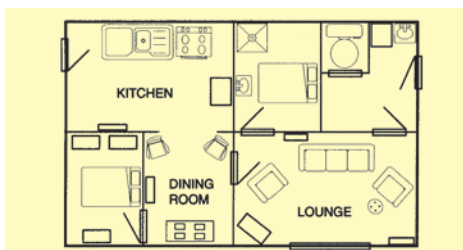


POTTER HEIGHAM BRIDGE



RIVER COTTAGE M45

Sleeps 4



Bungalow at Martham, between the two Staithes.

60ft. river frontage plus a boat dyke. Suitable for winter letting.

Two bedrooms, one with double bed and one with two single beds. Linen provided.

Lounge with colour T.V., video, DVD & digi box. Dining room.

Kitchen with electric cooker, fridge, freezer and microwave.

Shower in bedroom. Washroom with W.B. W.C. and washing machine.

PVCu double glazing and night storage heaters. Suitable for winter lets.

Electricity by £1 slot meter. Large tackle shed. Garden furniture provided.

**Riverside Holidays
ADVANCE BOOKINGS
for next year are
strongly advised,
BEFORE the end of
this year.**

**PUBLIC SLIP-WAYS
REPPS STAITHE &
MARTHAM**

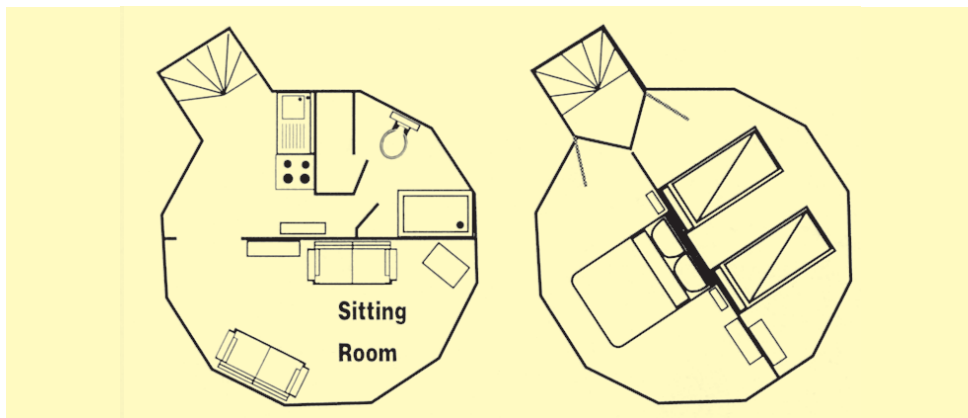
**RIVER BANK
ACCESS
BY FOOTPATH
AND BOAT ONLY**

WHEELCHAIRS

**In the managements opinion our holidays are
NOT suitable for wheelchairs.**

PETS

**Where pets are allowed there is a charge
of £20.00 per pet per week.**



A unique property. Iconic image of the Broads. Dutch Tutch is on the Ludham bank with a long river frontage.

Two upstairs bedrooms, one with a double bed & one with two single beds.

Linen provided. Access by steep winding stairs to first floor which has panoramic views of the river and grazing marshes.

Kitchen with electric cooker, fridge & microwave.

Lounge with colour T.V. and heater.

Bathroom with shower & W. C. **FREE ELECTRICITY.**

Garden furniture available. Tackle shed.

RIVERSIDE HOLIDAYS LTD 2018 PRICES

ALL BOOKINGS ARE FROM 4pm SATURDAY TO 10am SATURDAY
V.A.T. IS INCLUDED IN THE PRICES OF BUNGALOWS WHERE APPLICABLE

BUNGALOW	Page	Sleeps	A	B	C	D	E	F	G
			£	£	£	£	£	£	£
DUTCH TUTCH *	15	4	344	410	466	524	555	604	681
ELLESMERE *	8	6	344	410	457	510	539	587	655
HAVEN	10	4/6	344	410	457	510	539	587	655
KALINDA	7	6	344	417	482	537	573	618	693
MILDENE	9	7/8	368	451	574	654	695	755	849
MINDANAO	10	4	326	389	409	452	483	509	582
PATIKIPA	21	2	326	372	422	477	596	532	592
POTTERS REST	19	4	300	359	399	458	479	512	563
RANDS *	20	4	344	424	482	537	573	618	693
RIVER COTTAGE	14	4	344	410	466	524	555	604	681
ROSERY *	6	6	344	417	482	537	573	618	693

Date
Hire
Charge
Periods

Jan	6	-	May	26	A
May	26	-	June	2	B
June	2	-	June	9	B
June	19	-	June	16	C
June	16	-	June	23	F
June	23	-	June	30	F
June	30	-	July	7	F
July	7	-	July	14	F
July	14	-	July	21	F
July	21	-	July	28	G
July	28	-	Aug	4	G
Aug	4	-	Aug	11	G
Aug	11	-	Aug	18	G
Aug	18	-	Aug	25	G
Aug	25	-	Sept	1	G
Sept	1	-	Sept	8	E
Sept	8	-	Sept	15	D
Sept	15	-	Sept	22	C
Sept	22	-	Sept	29	B
Sept	29	-	Oct	6	B
Oct	6	-	Oct	13	A
Oct	13	-	Oct	20	A
Oct	20	-	Oct	27	B
Oct	27	-	Dec	16	A

SUNNYSIDE	11	4/6	360	433	497	547	573	627	706
SUNNYMEAD	18	4	366	424	490	541	573	618	693
THURNEVIEW	7	6	344	417	482	537	581	618	693
WILLOW *	23	2	270	294	322	359	371	399	438
WYNMILL *	12	4	344	417	497	547	578	627	706

Launch Prices

	High	Mid	Low
Phoenix	285	280	255
Elizabeth 1 & 2	295	270	240
Dolly	285	260	230
Poppy	285	260	230
Sue	290	265	235
Elizabeth 3	240	225	200
Betty	235	220	195
Kathleen	230	215	190
Dinghy	175	165	150

HIGH SEASON
July 7 - Sept 8

MID SEASON
May 19- July 7
Sept 8 - Oct 27

LOW SEASON
Before May 19
After Oct 27

* Free Electricity

Page Sleeps A B C D E F G

DEPOSITS (Initial payments)

BUNGALOWS: Prices A B - £90 per week (includes £14 payment to Hirers Cancellation Plan and £76 towards the cost of your holiday)

Prices C D E F G - £150 per week (includes £14 payment to Hirers Cancellation Plan and £136 towards the cost of your holiday)

LAUNCHES £50 per week (includes £24 payment to Hirers Cancellation Plan and £46 towards the cost of launch hire)

YOU ARE ADVISED TO BOOK EARLY TO AVOID DISAPPOINTMENT. PROVISIONAL BOOKINGS FOR 2019 CAN NOW ALSO BE ACCEPTED THESE WILL BE SUBJECT TO THE BUNGALOW OR LAUNCH SELECTED BEING AVAILABLE FOR 2019 AND THE FULL DEPOSIT WILL BE RETURNABLE IF YOU SHOULD DECIDE TO CANCEL FOR ANY REASON UP TO JANUARY 15th 2019

DO NOT DELAY IF YOU WISH TO SECURE THE BUNGALOW AND LAUNCH OF YOUR CHOICE

JUST RING 01692 - 580496



Bungalow on the Repps Bank, formerly 'Manora'. Private plot with approx 90ft river frontage. Owners boat is kept in the boat dyke. Bathroom with bath, basin, over-bath shower, and flush WC. Two bedrooms, one with a double bed and one with twin beds. All rooms have heaters. Lounge with colour TV, radio and DVD. Fully fitted kitchen with electric cooker, microwave, fridge, freezer and awasher drier. Linen is provided. Electricity by £1 slot meter.

Sorry no smoking inside the bungalow and no all male or female parties.

One pet by prior arrangement.

Free parking for one car near the bridge.

Wi-Fi available.

CAR PARKING

Visitors to most bungalows will have to park on pay parks
near Potter Heigham Bridge
(2017 prices varied between £10 - £33 per week)

FISHING

A closed season for fishing operates
throughout the Broads from
March 15th - June 15th

If you experience any problems during your stay please
let the owner of Riverside Holidays know as soon as
possible so that we can do our best to rectify the problem

Hire a boat with your bungalow

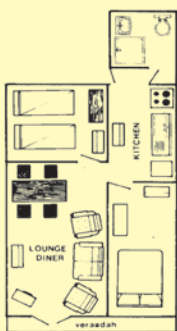


See pages 24-27

POTTERS REST

PH24

Sleeps 4



Bungalow on the Ludham Bank. Private plot with approx. 30ft river frontage. Two bedrooms, one with double bed and one with two single beds. Lounge/Diner with electric fire, freeview TV and DVD player. Electric heaters in all rooms. PVCu double glazing. Kitchen with cooker, fridge, sink, water heater and microwave. Linen provided. Electricity by £1 slot meter. Bathroom with bath/shower, WB and WC. Garden furniture provided.



Bungalow on Hickling bank near the bridge and shops with river frontage for mooring and fishing. Rands is close to the bridge and shops with open riverside opposite. Lawn beside the bungalow with patio furniture and tackle shed. Double bedroom with digital DVD, TV and electric heater. Bedroom with twin beds and electric heater. Beds pre-made up. Shared en-suite to bedrooms with large walk in shower WB, WC and heated towel rail. Lounge/Diner with 4 recliners, digital DVD TV and electric heater. Kitchen with fridge, electric heaters, cooker, extractor hood and microwave. UPVC windows and door. Available all year round. **FREE ELECTRICITY**

River Thurne from Potter Heigham Bridge



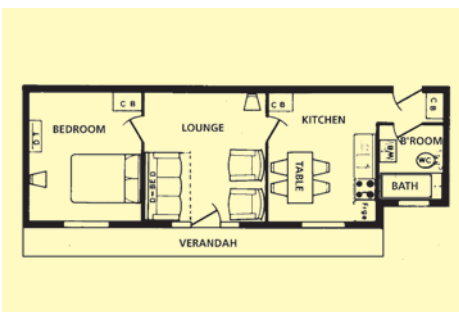
Hickling Bank. Patikipa and Rands



PATIKIPA

PH55

Sleeps 2



Bungalow with 42ft river frontage on the Hickling Bank. Near to the bridge and shops but still far enough away to offer a peaceful location with open views. One double bedroom with bed made for your arrival. Lounge with colour TV and video recorder. Separate kitchen with electric cooker, fridge freezer, dishwasher and microwave. Bathroom with shower, WB and WC. Electricity by £1 slot meter. Rooms have sufficient electric heaters for all year round occupation. Garden furniture provided. Tackle shed. A boat is available with this bungalow, please call Jan on 07535 125448 for further details.

RIVER BANK ACCESS BY FOOTPATH AND BOAT ONLY

CAR PARKING

There are car parks at Martham, Repps Staithe and near Potter Heigham Bridge.

Some bungalows have a free reserved parking space for one car.

Car park charges near the bridge at The Old Bridge Inn site:

16 June to 15 Sept - £33.00 per week

26 May to 16 June - £20.00 or £25.00 per week, per car.

15 Sept to 27 Oct - £20.00 or £25.00 per week, per car.

Before 26th May - £10.00 per week, per car.

After 27 Oct - £10.00 per week, per car.

Daily parking also available. No need to book in advance,
pay on arrival, (cash only please)

For a small charge there is a river taxi service which can take you
and your luggage between the carpark and your bungalow.

**IMPORTANT: WHEN YOU BOOK BY TELEPHONE, HAVE YOUR RIVERSIDE
HOLIDAYS BROCHURE WITH YOU.**

01692 580496

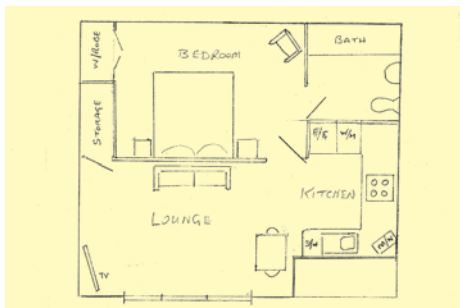
PETS

**Where pets are allowed there is a charge
of £20.00 per pet per week.**

WILLOW

PH76

Sleeps 2



Bungalow on the Hickling bank with approx. 30ft river front. Rebuilt in 2009 and extended in 2016. Open plan living area, wide screen TV and DVD. Large bedroom with full size double bed and en suite bathroom with full size bath, shower, wc and wb. Modern kitchen with electric cooker, microwave, fridge freezer, washer/dryer and dishwasher. Electric heating, linen provided and **FREE ELECTRICITY**. Outside lawn area with garden furniture and storage. Located next to Sunnyside PH76. No smoking inside the bungalow.
For more pictures and information see owners website:- www.willowandsunnyside.uk

PRIMROSE

PH80

Sleeps 4



Bungalow on the Hickling Bank. Private plot with 23ft river frontage. Two heated bedrooms, one with a double bed and one with two bunk beds. Linen provided. Lounge diner with colour T.V. DVD & Freeview, and heater. Kitchen with electric cooker, fridge and microwave. Shower room with shower, W.C., W.B., heated towel rail. **FREE ELECTRICITY**.
One small dog only.
No all male/female parties of more than 2 persons.

RIVERSIDE HOLIDAYS LTD

Woodcroft, Wood Street,
Catfield, Gt Yarmouth
NR29 5DF

Web: www.riverside-holiday.co.uk
E.mail: riversideholidays@keme.co.uk

Site office near Potter Heigham Bridge
Sat Nav - NR29 5JY

MAYCRAFT



Fishing dinghy

Seats 3

Fishing dinghy with new 4hp outboard engine - ideal for fishing in Hickling Broad area.

Sue / Elizabeth 1 & 2 / Dolly / Poppy

Diesel engine - Fuel included in price.

**Other Maycraft Boats
Fuel charged for.**

*ALL LAUNCHES HAVE
SELF STARTERS,
WHEEL STEERING AND
COVERED WHEELHOUSE OR
FOLDING HOOD*

*V.A.T. INCLUDED (at current rate)
IN LAUNCH PRICES
FUEL AND SECURITY DEPOSIT
- £50 PER LET*

PHOENIX MOTOR LAUNCHES



Six seater GRP launches with diesel engines.
£50 security deposit required.
V.A.T. included in price.
Free fuel.

2018 SEASON

HIGH SEASON:	<i>July 7 - Sept 8</i>	£285
MID SEASON:	<i>May 19 - July 7</i>	£280
	<i>Sept 8 - Oct 27</i>	£280
LOW SEASON:	<i>Before May 19</i>	£255
	<i>After Oct 27</i>	£255

WHY NOT HIRE A BOAT OF YOUR OWN FOR YOUR HOLIDAY

You can increase your fun so much by hiring a Motor Launch with your holiday accommodation to make daily tours of the local waters or broads, or for fishing expeditions. Hire terms of these craft, of course, include full insurance cover.

MOORING FOR YOUR BOAT DURING THE WEEK

Your boat can be taken away and kept at your holiday home, nearby staithe, or can be moored at the owners' boatyard. Please do not take bungalow cushions, crockery or cutlery on to the boats. When not booked by our bungalow clients, these boats may be hired by other Broadland visitors.

MAYCRAFT MOTOR LAUNCHES



Dolly

Seats 6



Kathleen

Seats 5



Sue

Seats 7



Poppy

Seats 6

MAYCRAFT MOTOR LAUNCHES



Celia

Seats 6



Elizabeth

Seats 8



Betty

Seats 8

2018 SEASON

	HIGH	MID	LOW		SEASON
ELIZABETH 1-2	295	270	240	HIGH:	July 7 - Sept 8
DOLLY	285	260	230	MID:	May 19 - July 7
POPPY	285	260	230		Sept 8 - Oct 27
SUE	290	265	235	LOW:	Before May 19
ELIZABETH 3	240	225	200		After Oct 27
BETTY	235	220	195		
KATHLEEN	230	215	190		
DINGHY	175	165	150		

CONDITIONS OF HIRE BUNGALOWS AND LAUNCHES ONLY

1. **TERMS.** All terms are per week, and for the property as equipped and described. The usual time of take-over is 4pm. subject to unavoidable delays). You must leave the property by 10am. You are expected to leave everything in a clean and tidy condition.

2. **BOOKING REMITTANCE.** When bookings are made the initial payment stated must be sent. The initial payment consists of a Booking deposit and a Cancellation plan subscription. The Booking Deposit forms part payment of the hire charge.

3. **BALANCE OF HIRE.** The balance of Hire Charge is due and payable at least 28 days before your holiday begins.

4. **BOOKING CANCELLATION. If you are compelled to cancel, notify us immediately in writing — AND RETURN YOUR HIRE INVOICE.** You will receive a written acknowledgement of your cancellation by return . We will then endeavour to re-let for you . If we are successful in reletting you only forfeit your deposit monies. If we don't re-let you are responsible for the whole of the balance due. Your subscription to the Cancellation Plan covers you for this liability, if you cancel for one of the qualifying reasons.

5. **NON-ARRIVAL.** If you do not take possession of the bungalow and/or boat on the appointed day and fail to notify Riverside Holidays of your late arrival, we reserve the right to re-let the bungalow and/or boat from 10am. of the following day. In all cases of non-arrival the hirer will be responsible for the balance due.

6. **MINORS.** Bookings from those who are under 18 cannot normally be accepted.

7. **TOWELS.** These are not supplied with your linen.

8. **ACCOMMODATION.** No property may normally be occupied by more persons than stated. An additional person can be accommodated on certain properties at an extra charge of £30 per week. By prior arrangement).

9. **AVAILABILITY.** The booking is made on the understanding that the property will be placed at your disposal on the date stated. Should this not be possible through circumstances not under the control of the owner e.g. fire, theft, damage) we cannot guarantee to provide an alternative property in which case the booking deposit will be returned to you in full, but you will have no claim against the owner or agent. In the interests of continued improvement, the owner reserves the right to alter or delete facilities previously available without prior notice.

10. **PETS.** Some bungalows clearly and strictly state NO PETS others allow one pet per bungalow. Sometimes additional pets are allowed by prior arrangement. £20 per pet per week is charged. You are allowed to bring your pet on the clear understanding that in NO circumstances may you pet lay on the bedding or chairs.

11. **LAYOUT PLANS** of Holiday Homes in this Brochure are for general guidance only. They are not drawn to scale.

12. Whilst every care is taken to ensure that the details shown in this Brochure are correct, Riverside Holidays Ltd cannot accept responsibility for errors contained therein or the results thereof.

13. **CONTRACT.** A booking forms a contract between the hirer and the bungalow owner, Riverside Holidays Ltd. acts as an agent for the owner.

14. **Note:** Where bungalow description states, double bed, this may only be 4ft.

15. **WHEELCHAIRS** In the managements opinion our holidays are NOT suitable for wheelchairs.

CANCELLATION PLAN

You are automatically covered by Riverside Holidays Ltd. Cancellation Plan as soon as you pay your initial payment.

As you will have seen from the Conditions of Hire, you as a hirer are responsible for the full hire of your property, even if you are not able to take possession. To help you meet this condition you are covered by Riverside Holidays Ltd. under their Cancellation Plan which offers you the following benefits.

1. If you are forced to cancel **prior to your holiday because of illness, death, injury or maternity, or illness of any member of your party. or Jury service by you or your wife, or because of your own redundancy** (qualifying for payment under the Redundancy Payment Act 1965) **or death, or serious injury or illness of a close relative, and this can be substantiated***, and has arisen since you made the booking, then you will no longer be liable for the balance of hire monies due on your bookings.

TO QUALIFY YOU MUST NOTIFY US IMMEDIATELY THE CIRCUMSTANCES ARISE. This cover extends to provide you with a refund of your balance of hire if such qualifying circumstances arise before you leave home for your holiday, and where you have already paid your balance of-hire monies.

* Close relative means the husband, wife, father, mother, father-in-law mother-in-law, brother, sister child or dependent person in whose name the booking is made.

2. You will no longer be responsible for the balance of hire if you cancel:

- (a) in circumstances covered in Para 1.
- (b) more than 56 days before your holiday commences for whatever reason.

3. You will have your deposit refunded if you cancel:

- (a) more than 3 months before your holiday commences for whatever reason
- (b) more than 56 days before your holiday commences in circumstances covered in Para 1.

4. You will have half your deposit refunded if you cancel:

- (a) more than 56 days before your holiday commences for reasons not covered in Para 1.
- (b) between 21 days and 55 days before your holiday commences in circumstances covered in Para 1.

5. Your deposit will **NOT** be refunded and you will be held responsible for the balance of hire if you cancel:

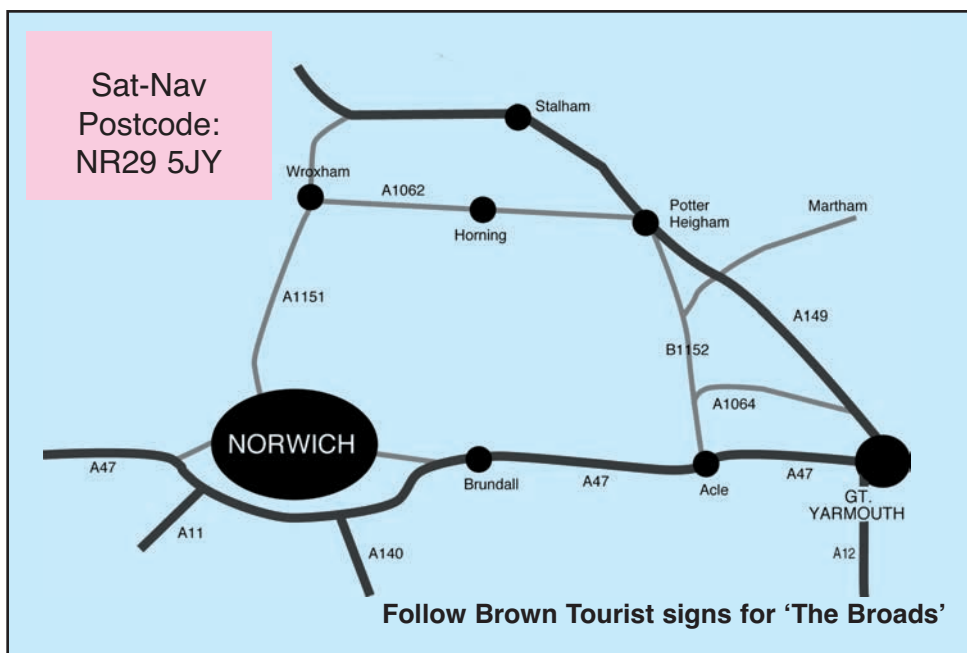
- (a) Less than 56 days before your holiday for reasons not covered in Para 1.
- (b) Within 24 hours of the commencement time of your holiday for any reason.

However if we are able to re-let the bungalow you will not be liable for part or all of the balance of hire.

IF YOU NEED TO CANCEL. WRITE TO US IMMEDIATELY AND ENCLOSE YOUR HIRE INVOICE.

***The decision of Riverside Holidays Ltd.
on all claims will be final.***

RIVER BANK ACCESS BY FOOTPATH AND BOAT ONLY



IMPORTANT
IT IS BEST TO FIRST BOOK BY PHONE
01692 - 580496

BUNGALOW		LAUNCH	
.....
DATES	FROM.....	TO.....	
PARTY	NAME.....	NAME	
	NAME.....	NAME	
	NAME.....	NAME	

BUNGALOWS PRICE CATAGORIES A B - £90 PER WEEK

(INCLUDING £14 PER WEEK CANCELLATION PLAN SUBSCRIPTION)

See below

LAUNCHES AT £50 PER WEEK (INCLUDING £4 PER WEEK CANCELLATION PLAN SUBSCRIPTION)

TOTAL

3	2

Date _____

Tel.No.

Mobile

e-mail

INITIAL PAYMENTS ARE FULLY RETURNABLE BEFORE 15th JANUARY

NB
CANCELLATION PLAN AS SHOWN IN
BROCHURE ONLY COVERS PERSONS
NAMED ON BOOKING FORM

BOOKING FORM 2018

JUST SEND THIS FORM WITH YOUR MONIES TO:-
RIVERSIDE HOLIDAYS LTD., WOODCROFT, WOOD STREET, CATFIELD, GT.YARMOUTH, NORFOLK. NR29 5DF
PLEASE BOOK FOR ME:-

IMPORTANT
IT IS BEST TO FIRST BOOK BY PHONE
01692 - 580496

BUNGALOW LAUNCH
DATES FROM TO
PARTY NAME NAME
..... NAME NAME
..... NAME NAME

ARE YOU BRINGING A DOG? Please state YES OR NO
BUNGALOWS PRICE CATEGORIES A B - £90 PER WEEK
C D E F G - £150 PER WEEK
(INCLUDING £14 PER WEEK CANCELLATION PLAN SUBSCRIPTION)
INITIAL PAYMENT. LAUNCHES AT £50 PER WEEK (INCLUDING £4 PER WEEK
See below CANCELLATION PLAN SUBSCRIPTION)
TOTAL

I declare that I am over 18 years of age and I agree to be held responsible for the balance of Hire
Terms which become due in accordance with the conditions stated in Riverside Holidays Ltd.

Signature Date
NAME (IN CAPITALS) MR/MRS/MISS Tel.No.
ADDRESS mobile
.....
e.mai

£	p

NB
CANCELLATION PLAN AS SHOWN IN
BROCHURE ONLY COVERS PERSONS
NAMED ON BOOKING FORM

INITIAL PAYMENTS ARE FULLY RETURNABLE BEFORE 15th JANUARY

Riverside Holidays



2018

Satnav - NR29 5JY
Tel - 01692 580496