

# RIVERSIDE HOLIDAYS

## NORFOLK BROADS

A scenic view of a Norfolk Broad. In the foreground, a person is sitting on a launch, looking across the water. They are holding a large black umbrella. The water is calm, and there are two swans swimming in the distance. In the background, there is a row of houses and trees along the bank. The sky is blue and clear.

### BUNGALOWS & LAUNCHES FOR HIRE

RIVERSIDE HOLIDAYS LTD.

WOODCROFT, WOOD STREET, CATFIELD GT. YARMOUTH, NORFOLK NR29 5DF

TELEPHONE: 01692 580496

e.mail: [riversideholidays@keme.co.uk](mailto:riversideholidays@keme.co.uk)

web: [www.riverside-holidays.co.uk](http://www.riverside-holidays.co.uk)

**IMPORTANT: WHEN YOU BOOK BY TELEPHONE, HAVE YOUR RIVERSIDE  
HOLIDAYS BROCHURE WITH YOU.  
01692 580496**

**FISHING - CLOSED SEASON**  
**A closed season for fishing operates**  
**throughout the Broads from 15<sup>th</sup> March to 15<sup>th</sup> June**



### **Last Minute Bookings**

Vacancies do occur from time to time through cancellations.

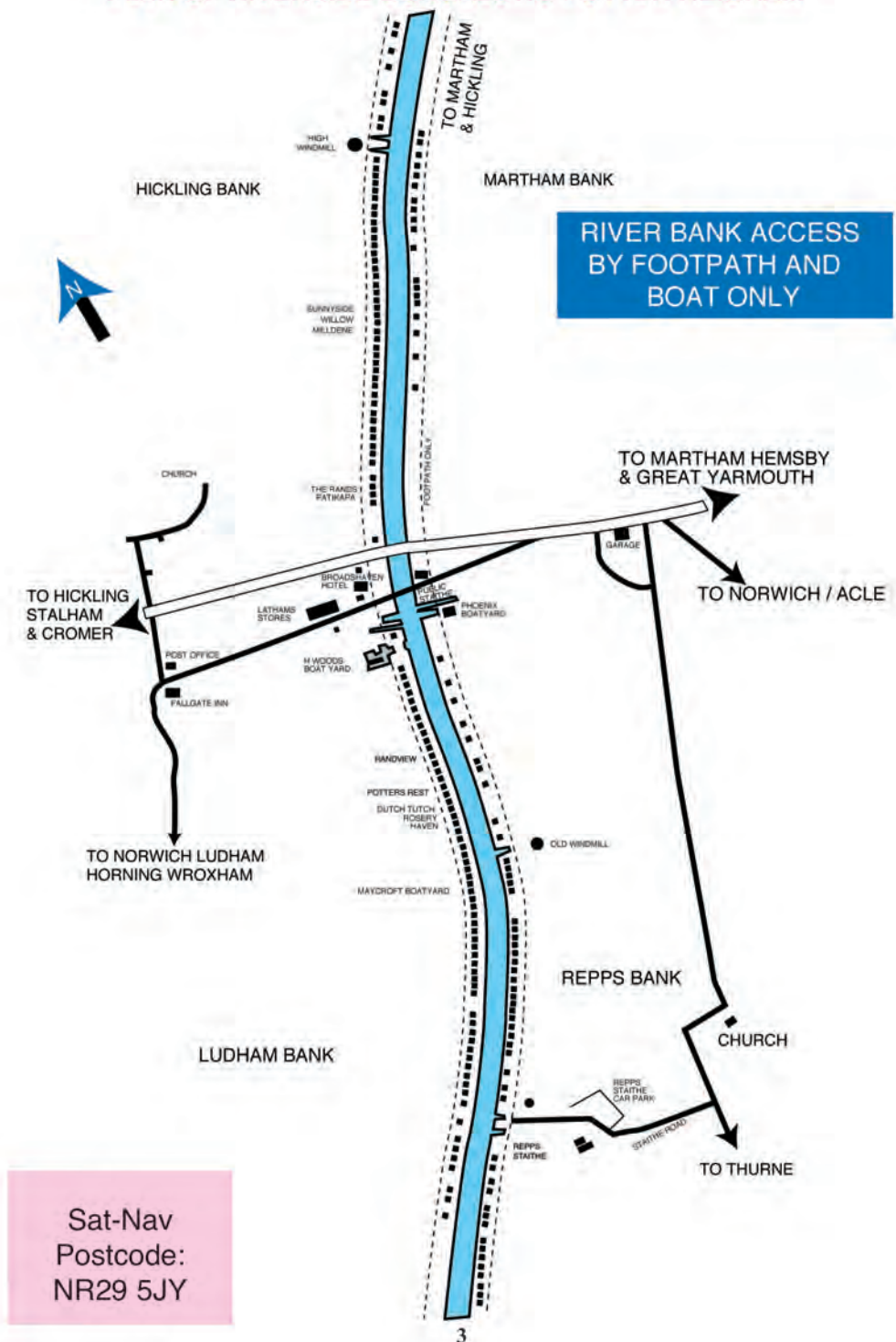
If you want to book a holiday relatively at a short notice - even as little as 24 hours - please do phone us. We will always do our best for you.

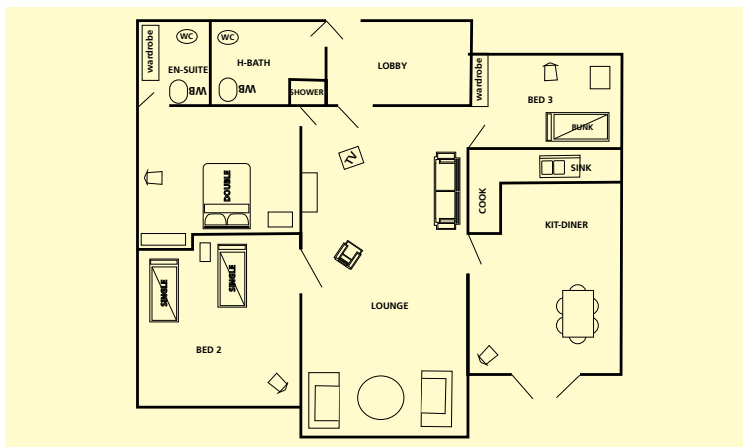
**ARRIVALS** - All visitors should report to the Site Office at Potter Heigham Bridge (For sat-nav - NR29 5JY). Visitors should inform the Booking Office of their expected time of arrival by sending back the pink arrival slip, duly completed, **28 days** before their holiday is due to start. For those arriving early we will try to arrange for their accommodation to be ready as soon after **12 noon** as possible. For visitors arriving after **5p.m.** arrangements will be made for them to be met at the Site Office.

The Site Office at POTTER HEIGHAM is open during the main season on  
**SATURDAYS between 9a.m. and 5p.m. June to October.**



# PLAN OF RIVERSIDE BUNGALOWS POTTER HEIGHAM





Bungalow on the Ludham bank with a 40ft river frontage.

Three bedrooms one with double bed and ensuite bathroom. One with two single beds and one with two bunk beds. Linen provided.

Lounge with colour TV and electric fire. There are also numerous electric heaters.

Kitchen/diner with electric cooker, fridge, small freezer, microwave, dishwasher and electric water heater over sink. Shower room with shower wash basin and WC.

**FREE ELCTRICITY**

### **PETS**

**Where pets are allowed there is a charge of £20.00 per pet per week.**



Bungalow on the Ludham bank, with 30 ft. river frontage.

Two bedrooms, one with double bed and one with two single beds. Also bed-settee in lounge. Linen provided.

Lounge/diner with colour TV and electric fire. All rooms have heaters.

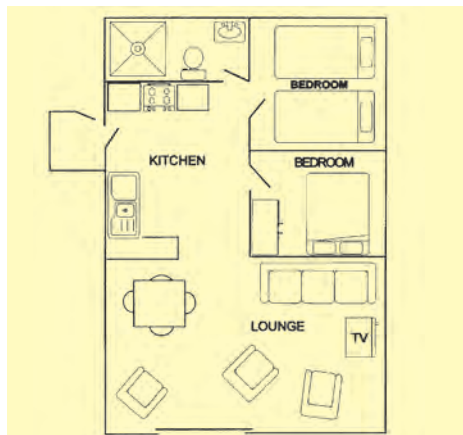
Kitchen area with electric cooker, fridge and microwave.

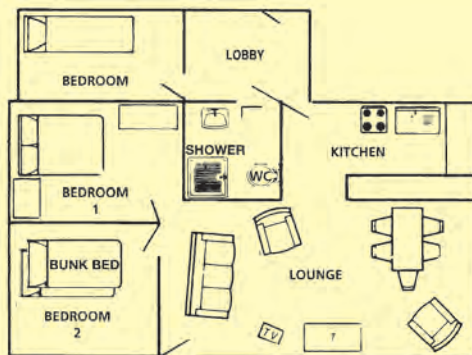
Peninsula unit divides kitchen from lounge.

Shower room with shower, WB and WC.

Electricity by £1 meter.

Part of lawn fenced for children. Garden furniture provided. Sorry no pets.





Riverside bungalow at Martham. Private plot with 70ft river frontage & boat dyke. Quiet location at upper reaches of the River Thurne with open views. Three bedrooms - one with double bed, one with bunkbeds, & one with single bed. Linen provided.

Lounge with colour television and digi-box.

Electricity charged by units used.

Kitchen: Open plan with electric cooker, fridge, microwave and water heater.

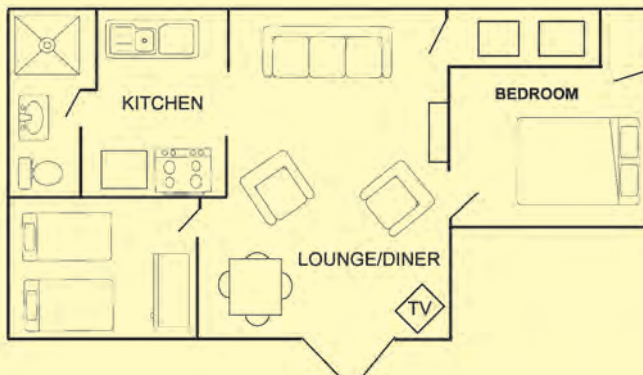
Shower room with shower, wash basin and WC. Garden furniture provided.

Free reserved parking space at Martham Ferry.

### WHEELCHAIRS

In the managements opinion our holidays are  
**NOT** suitable for wheelchairs.





Bungalow on the Hickling bank with approx. 90ft riverfront including boat dyke. Two bedrooms, one with full size double bed and TV, the other with two full size single beds. There is also a convertible bed settee in the lounge. Open plan lounge diner with wide screen TV and DVD player. Kitchen with electric cooker, microwave, fridge, freezer and dishwasher. A washing machine and tumble dryer are also provided. Shower room with double size shower cubicle, WB and WC. Electric heating, linen provided and **FREE ELECTRICITY**. Outside lawn area with garden furniture. Tackle shed. Located next to Willow PH76b. Free parking for one car near the bridge. No smoking inside the bungalow. Sorry no pets.

# **RIVER BANK ACCESS BY FOOTPATH AND BOAT ONLY**

## **CAR PARKING**

There are car parks at Martham, Repps Staithe and near Potter Heigham Bridge.

Some bungalows have a free reserved parking space for one car.

At The Old Bridge Inn site next to the Bridge, parking charges are:

17 June to 16 Sept - £35.00

20 May to 17 June - £25.00

16 Sept to 28 Oct - £25.00

Before 20 May - £10.00

After 28 Oct - £10.00

No need to book in advance.

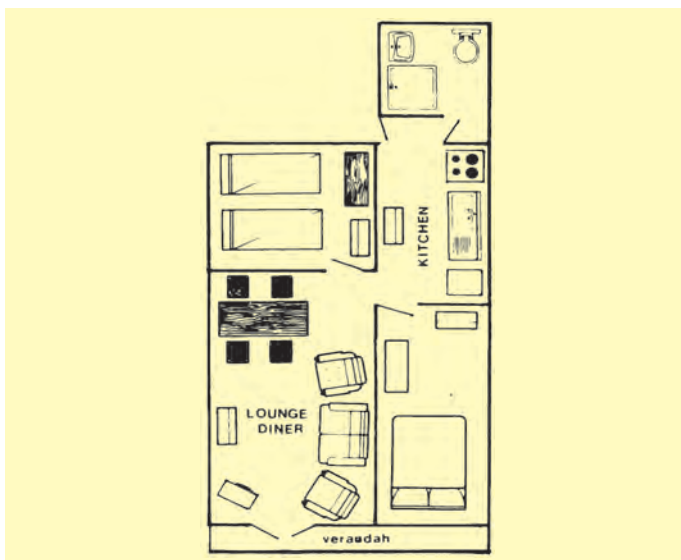
Payment on arrival by cash only please.

Daily parking also available.

For a small charge there is a river taxi service which can take you and your luggage between the carpark and your bungalow.

**If you experience any problems during your stay please let the owner of Riverside Holidays know as soon as possible so that we can do our best to rectify the problem**





Bungalow on the Ludham Bank. Private plot with approx. 30ft river frontage. Two bedrooms, one with double bed and one with two single beds. Lounge/Diner with electric fire, freeview TV and DVD player. Electric heaters in all rooms. PVCu double glazing. Kitchen with cooker, fridge, sink, water heater and microwave. Linen provided. Electricity by £1 slot meter. Bathroom with bath/shower, WB and WC. Garden furniture provided.



Bungalow on Hickling bank near the bridge and shops with river frontage for mooring and fishing. Rands is close to the bridge and shops with open riverside opposite. Lawn beside the bungalow with patio furniture and tackle shed. Double bedroom with digital DVD, TV and electric heater. Bedroom with twin beds and electric heater. Beds pre-made up. Shared en-suite to bedrooms with large walk in shower WB, WC and heated towel rail. Lounge/Diner with 4 recliners, digital DVD TV and electric heater. Kitchen with fridge, electric heaters, cooker, extractor hood and microwave. UPVC windows and door. Available all year round. **FREE ELECTRICITY**

**IMPORTANT: WHEN YOU BOOK BY TELEPHONE, HAVE YOUR RIVERSIDE  
HOLIDAYS BROCHURE WITH YOU.  
01692 580496**

## **RIVERSIDE HOLIDAYS LTD**

**Woodcroft, Wood Street,  
Catfield, Gt Yarmouth  
NR29 5DF**

**Web: [www.riverside-holidays.co.uk](http://www.riverside-holidays.co.uk)  
E.mail: [riversideholidays@keme.co.uk](mailto:riversideholidays@keme.co.uk)**

**Site office near Potter Heigham Bridge  
Sat Nav - NR29 5JY**

**For a small charge there is a river taxi service which can take you  
and your luggage between the carpark and your bungalow.**

### **FISHING - CLOSED SEASON**

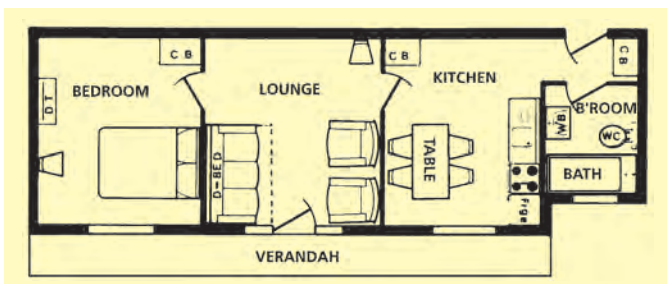
**A closed season for fishing operates  
throughout the Broads from 15<sup>th</sup> March to 15<sup>th</sup> June**



**\*FREE ELECTRICITY**

**DO NOT DELAY IF YOU WISH TO SECURE THE BUNGALOW AND LAUNCH OF YOUR CHOICE  
JUST CALL - 01692 580496**

**DO NOT DELAY IF YOU WISH TO SECURE THE BUNGALOW AND LAUNCH OF YOUR CHOICE**  
**JUST RING 01692 - 580496**

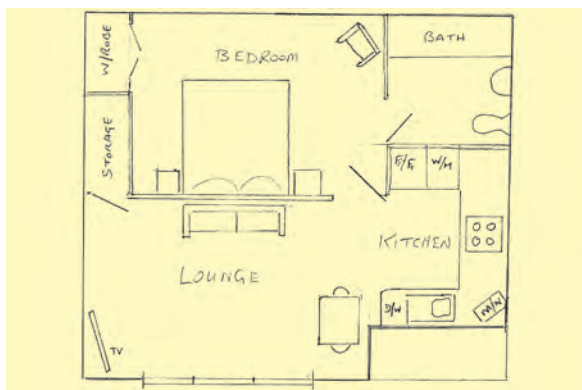


Bungalow with 42ft river frontage on the Hickling Bank. Near to the bridge and shops but still far enough away to offer a peaceful location with open views. One double bedroom with bed made for your arrival. Lounge with colour TV and video recorder. Separate kitchen with electric cooker, fridge freezer, dishwasher and microwave. Bathroom with shower, WB and WC. Electricity by £1 slot meter. Rooms have sufficient electric heaters for all year round occupation. Garden furniture provided. Tackle shed.

Patikipa and Rands  
on  
Hickling Bank







Bungalow on the Hickling bank with approx. 30ft river front. Rebuilt in 2009 and extended in 2016. Open plan living area, wide screen TV and DVD.

Large bedroom with full size double bed and en suite bathroom with full size bath, shower, wc and wb. Modern kitchen with electric cooker, microwave, fridge freezer, washer/dryer and dishwasher. Electric heating, linen provided and **FREE ELECTRICITY**. Outside lawn area with garden furniture and storage. Located next to Sunnyside PH76. No smoking inside the bungalow. Sorry no pets.

# **RIVER BANK ACCESS BY FOOTPATH AND BOAT ONLY**

## **CAR PARKING**

There are car parks at Martham, Repps Staithe and near Potter Heigham Bridge.

Some bungalows have a free reserved parking space for one car.

At The Old Bridge Inn site next to the Bridge parking charges range from £10 to £35 per car per week

No need to book in advance

Payment on arrival, by cash only

Daily parking also available

For a small charge there is a river taxi service which can take you and your luggage between the carpark and your bungalow.

**IMPORTANT: WHEN YOU BOOK BY TELEPHONE, HAVE YOUR RIVERSIDE  
HOLIDAYS BROCHURE WITH YOU.**

**01692 580496**

## **PETS**

**Where pets are allowed there is a charge  
of £20.00 per pet per week.**

## PHOENIX MOTOR LAUNCHES



Six seater GRP launches with diesel engines.  
£50 security deposit required.  
V.A.T. included in price.  
Free fuel.

### ***2023 SEASON***

<b><i>HIGH SEASON:</i></b>	<i>July 1 - Sept 2</i>
<b><i>MID SEASON:</i></b>	<i>May 13 - July 1</i> <i>Sept 2 - Oct 28</i>
<b><i>LOW SEASON:</i></b>	<i>Before May 13</i> <i>After Oct 28</i>

### **WHY NOT HIRE A BOAT OF YOUR OWN FOR YOUR HOLIDAY**

You can increase your fun so much by hiring a Motor Launch with your holiday accommodation to make daily tours of the local waters or broads, or for fishing expeditions. Hire terms of these craft, of course, include full insurance cover.

### **MOORING FOR YOUR BOAT DURING THE WEEK**

Your boat can be taken away and kept at your holiday home, nearby staithe, or can be moored at the owners' boatyard. Please do not take bungalow cushions, crockery or cutlery on to the boats. When not booked by our bungalow clients, these boats may be hired by other Broadland visitors.



## MAYCRAFT MOTOR LAUNCHES



Dolly

Seats 6



Kathleen

Seats 5



Sue

Seats 7



Poppy

Seats 6



Fishing dinghy

Seats 3

Fishing dinghy with new 4hp outboard engine - ideal for fishing in Hickling Broad area.



Elizabeth

Seats 8



Betty

Seats 8

## 2023 SEASON

	HIGH	MID	LOW		SEASON
Phoenix	360	355	325	<b>HIGH:</b>	July 1 - Sept 2
Elizabeth	320	305	275	<b>MID:</b>	May 13 - July 1
Dolly	310	295	265		Sept 2 - Oct 28
Poppy	310	295	265	<b>LOW:</b>	Before May 13
Sue	315	300	270		After Oct 28
Betty	260	255	230		
Kathleen	255	250	225		
Dinghy	200	200	185		

## CONDITIONS OF HIRE BUNGALOWS AND LAUNCHES ONLY

1. **TERMS.** All terms are per week, and for the property as equipped and described. The usual time of take-over is 4pm. subject to unavoidable delays). You must leave the property by 10am. You are expected to leave everything in a clean and tidy condition.
2. **BOOKING REMITTANCE.** When bookings are made the initial payment stated must be sent. The initial payment consists of a Booking deposit and a Cancellation plan subscription. The Booking Deposit forms part payment of the hire charge.
3. **BALANCE OF HIRE.** The balance of Hire Charge is due and payable at least 28 days before your holiday begins.
4. **BOOKING CANCELLATION. If you are compelled to cancel, notify us immediately in writing — AND RETURN YOUR HIRE INVOICE.** You will receive a written acknowledgement of your cancellation by return . We will then endeavour to re-let for you . If we are successful in reletting you only forfeit your deposit monies. If we don't re-let you are responsible for the whole of the balance due. Your subscription to the Cancellation Plan covers you for this liability, if you cancel for one of the qualifying reasons.
5. **NON-ARRIVAL.** If you do not take possession of the bungalow and/or boat on the appointed day and fail to notify Riverside Holidays of your late arrival, we reserve the right to re-let the bungalow and/or boat from 10am. of the following day. In all cases of non-arrival the hirer will be responsible for the balance due.
6. **MINORS.** Bookings from those who are under 18 cannot normally be accepted.
7. **TOWELS.** These are not supplied with your linen.
8. **ACCOMMODATION.** No property may normally be occupied by more persons than stated. An additional person can be accommodated on certain properties at an extra charge of £30 per week. By prior arrangement).
9. **AVAILABILITY.** The booking is made on the understanding that the property will be placed at your disposal on the date stated. Should this not be possible through circumstances not under the control of the owner e.g. fire, theft, damage) we cannot guarantee to provide an alternative property in which case the booking deposit will be returned to you in full, but you will have no claim against the owner or agent. In the interests of continued improvement, the owner reserves the right to alter or delete facilities previously available without prior notice.
10. **PETS.** Some bungalows clearly and strictly state NO PETS others allow one pet per bungalow. Sometimes additional pets are allowed by prior arrangement. £20 per pet per week is charged. You are allowed to bring your pet on the clear understanding that in NO circumstances may you pet lay on the bedding or chairs.
11. **LAYOUT PLANS** of Holiday Homes in this Brochure are for general guidance only. They are not drawn to scale.
12. Whilst every care is taken to ensure that the details shown in this Brochure are correct, Riverside Holidays Ltd cannot accept responsibility for errors contained therein or the results thereof.
13. **CONTRACT.** A booking forms a contract between the hirer and the bungalow owner, Riverside Holidays Ltd. acts as an agent for the owner.
14. **Note:** Where bungalow description states, double bed, this may only be 4ft.
15. **WHEELCHAIRS** In the managements opinion our holidays are NOT suitable for wheelchairs.

## CANCELLATION PLAN

You are automatically covered by Riverside Holidays Ltd. Cancellation Plan as soon as you pay your initial payment.

As you will have seen from the Conditions of Hire, you as a hirer are responsible for the full hire of your property, even if you are not able to take possession. To help you meet this condition you are covered by Riverside Holidays Ltd. under their Cancellation Plan which offers you the following benefits.

1. If you are forced to cancel **prior to your holiday because of illness, death, injury or maternity, or illness of any member of your party, or Jury service by you or your wife, or because of your own redundancy** (qualifying for payment under the Redundancy Payment Act 1965) or **death, or serious injury or illness of a close relative, and this can be substantiated\***, and has arisen since you made the booking, then you will no longer be liable for the balance of hire monies due on your bookings.

**TO QUALIFY YOU MUST NOTIFY US IMMEDIATELY THE CIRCUMSTANCES ARISE.** This cover extends to provide you with a refund of your balance of hire if such qualifying circumstances arise before you leave home for your holiday, and where you have already paid your balance of-hire monies.

\* Close relative means the husband, wife, father, mother, father-in-law mother-in-law, brother, sister child or dependent person in whose name the booking is made.

2. You will no longer be responsible for the balance of hire if you cancel:

- (a) in circumstances covered in Para 1.
- (b) more than 56 days before your holiday commences for whatever reason.

3. You will have your deposit refunded if you cancel:

- (a) more than 3 months before your holiday commences for whatever reason
- (b) more than 56 days before your holiday commences in circumstances covered in Para 1.

4. You will have half your deposit refunded if you cancel:

- (a) more than 56 days before your holiday commences for reasons not covered in Para 1.
- (b) between 21 days and 55 days before your holiday commences in circumstances covered in Para 1.

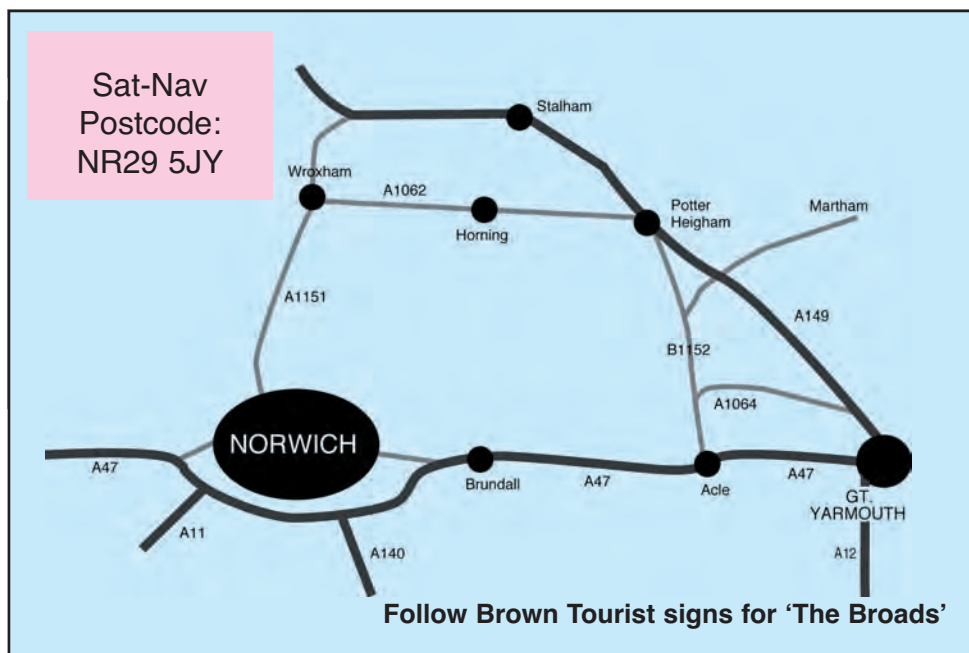
5. Your deposit will **NOT** be refunded and you will be held responsible for the balance of hire if you cancel:

- (a) Less than 56 days before your holiday for reasons not covered in Para 1.
- (b) Within 24 hours of the commencement time of your holiday for any reason.

However if we are able to re-let the bungalow you will not be liable for part or all of the balance of hire.

**IF YOU NEED TO CANCEL. WRITE TO US IMMEDIATELY AND ENCLOSE YOUR HIRE INVOICE.**

*The decision of Riverside Holidays Ltd.  
on all claims will be final.*



## Riverside Holidays Ltd

Riverside Holidays Ltd is a small family run business which has been providing self-catering holidays in riverbank bungalows for 40 years.

Most of our bungalows are along the river Thurne in Potter Heigham, Repps and Martham based around the medieval bridge in the Broads National Park.

The River Thurne offers excellent fishing especially for Bream, Roach, Perch and Pike, either from bungalow lawns or by boat further up river at Hickling Broad, Martham Broad and Horsey Mere.

The Broads National Park can be explored by boat but also offers fabulous opportunities for walking and cycling. The Weavers Way trail passes along the riverbank here. There are National Reserves within easy reach by boat, car or cycle. Bird watchers can see Harriers, Crane, Bearded Tits and perhaps Bitterns. Otters and Swallowtail butterflies are sometimes seen on bungalow lawns!

At Potter Heigham there are cafes and restaurants, two pubs, plus Lathams with its large fishing tackle section.

Quiet sandy beaches and dunes are less than five miles away (with seal colonies in autumn and winter). The large seaside resort of Great Yarmouth is only ten minutes away, while the historic city and shopping centre of Norwich is only fifteen miles. We hope you will enjoy your stay in Norfolk.



# BOOKING FORM 2023

JUST SEND THIS FORM WITH YOUR MONIES TO:-  
RIVERSIDE HOLIDAYS LTD., WOODCROFT, WOOD STREET, CATFIELD, GT.YARMOUTH, NORFOLK. NR29 5DF  
PLEASE BOOK FOR ME:-

## IMPORTANT

IT IS BEST TO FIRST BOOK BY PHONE  
01692 - 580496

BUNGALOW

LAUNCH .....

DATES

FROM.....

TO.....

PARTY

NAME.....

NAME .....

NAME.....

NAME .....

NAME.....

NAME .....

ARE YOU BRINGING A DOG? Please state YES OR NO.....

BUNGALOW'S PRICE CATEGORIES A B - £90 PER WEEK

C D E F G - £150 PER WEEK

INITIAL  
PAYMENT.

(INCLUDING £14 PER WEEK CANCELLATION PLAN SUBSCRIPTION)

See below

LAUNCHES AT £50 PER WEEK (INCLUDING £4 PER WEEK  
CANCELLATION PLAN SUBSCRIPTION) .....

I declare that I am over 18 years of age and I agree to be held responsible for the balance of Hire  
Terms which become due in accordance with the conditions stated in Riverside Holidays Ltd.

TOTAL

£		p

Signature

.....

Date .....

NAME (IN CAPITALS) MR/MRS/MISS

.....

Tel.No. ....

ADDRESS

.....

mobile .....

.....

e.mai

.....

NB

CANCELLATION PLAN AS SHOWN IN  
BROCHURE ONLY COVERS PERSONS  
NAMED ON BOOKING FORM

INITIAL PAYMENTS ARE FULLY RETURNABLE BEFORE 15th JANUARY

# BOOKING FORM 2023

JUST SEND THIS FORM WITH YOUR MONIES TO:-  
RIVERSIDE HOLIDAYS LTD., WOODCROFT, WOOD STREET, CATFIELD, GT.YARMOUTH, NORFOLK. NR29 5DF  
PLEASE BOOK FOR ME:-

IMPORTANT  
IT IS BEST TO FIRST BOOK BY PHONE  
01692 - 580496

## BUNGALOW

### DATES

FROM..... TO..... LAUNCH .....

### PARTY

NAME..... NAME.....  
NAME..... NAME.....  
NAME..... NAME.....

ARE YOU BRINGING A DOG? Please state YES OR NO.....

BUNGALOWS PRICE CATEGORIES A B - £90 PER WEEK

C D E F G - £150 PER WEEK

INITIAL  
PAYMENT.

(INCLUDING £14 PER WEEK CANCELLATION PLAN SUBSCRIPTION)

See below

LAUNCHES AT £50 PER WEEK (INCLUDING £4 PER WEEK

CANCELLATION PLAN SUBSCRIPTION) .....

I declare that I am over 18 years of age and I agree to be held responsible for the balance of Hire  
Terms which become due in accordance with the conditions stated in Riverside Holidays Ltd.

TOTAL

Signature

..... Date .....

NAME (IN CAPITALS) MR/MRS/MISS .....

Tel.No. ....

ADDRESS

..... Mobile .....

e.mail

.....

NB

CANCELLATION PLAN AS SHOWN IN  
BROCHURE ONLY COVERS PERSONS  
NAMED ON BOOKING FORM

INITIAL PAYMENTS ARE FULLY RETURNABLE BEFORE 15th JANUARY

£	p

# **Riverside Holidays**



**2023**

Email - [riversideholidays@keme.co.uk](mailto:riversideholidays@keme.co.uk)

Satnav - NR29 5JY

Tel - 01692 580496